



TEREX | FINLAY

PROGRESS THROUGH DIVERSITY

SPALECK[®] since 1869
conveying and separation technology



883+

883+ HEAVY DUTY SCREENER

SPECIFICATION:

Screen Size:

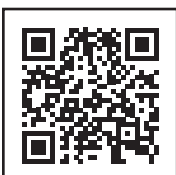
Top deck: 4800mm x 1530mm (16' x 5')
Bottom deck: 4800mm x 1530mm (16' x 5')

Net Engine Power: Tier 3 Equivalent:
Tier 3 Equivalent:
Stage IIIA Constant Speed:
Tier 4F / Stage IV:

Caterpillar C4.4 ATAAC 83kW (111.3hp)
Caterpillar C4.4 97kW (130hp)
Caterpillar C4.4 97kW (130hp)
Caterpillar C4.4 82kW (110 hp)

Portability:
Stockpilers:
Operating Weight:

Track Mounted
3 onboard Hydraulic Folding
30,500kg (67,240lbs)



SPECIFICATION

HOPPER / FEEDER

Hopper Capacity: 7m³ (9.16yd³)

Feed height: 3.6m (11' 10")

Feed in width: 2.6m (8' 7")

Drive: Hydraulic variable speed drive via high torque gearbox

Apron feeder dimensions: 1m wide x 3.81m (40" x 12' 6")

Speed: variable, 0 - 25mpm (83ft/min)

Abrasion Resistant steel pan apron feeder mounted with wide mouth opening

SCREEN BOX

Top deck: 4.8m x 1.53m (16' x 5')

Bottom deck: 4.8m x 1.53m (16' x 5')

Tensioning top deck: Rigid Top Deck std (side tensioned mats available as option)

Tensioning bottom deck: Flip Flow Bottom Deck

Drive: hydraulic with heavy duty bearing

Catwalks: Galvanised access catwalk on both sides of screen

Screen Angle: 13° - 19°, hydraulic adjust

Screen Speed: 720 - 810 rpm* *Each tuned box has a specific speed within this range (noted on screen drive)

Screen stroke standard: Rigid Stroke: 10mm. Live Deck Stroke: 22 - 26mm

Screen box discharge end raises hydraulically 500mm to facilitate mesh changing

Media options: 3D Punch Plate (top deck) or Heavy Duty Mats (top deck)

Total screening area: 14.4m² (155ft²)

OVERSIZE CONVEYOR

Belt width: 1.2m (48")

Belt spec: 3 ply Belt, EP 400

Working Angle: 18° - 24°, hydraulic adjust

Speed: Variable speed, 50 m/min max belt speed

Impact bars 2/3 Length of Conveyor

Steel skirted full length of conveyor

Discharge Height: 3.6m (11' 10")

Stockpile capacity: 70m³ (91yd³) max

TRANSFER CONVEYOR

Belt width: 1.2m (48")

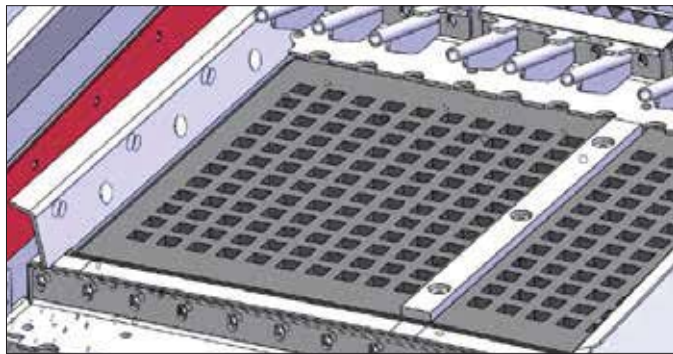
Belt spec: 3 ply Belt, EP 400

Belt Speed: 83 m/min (272ft/min)

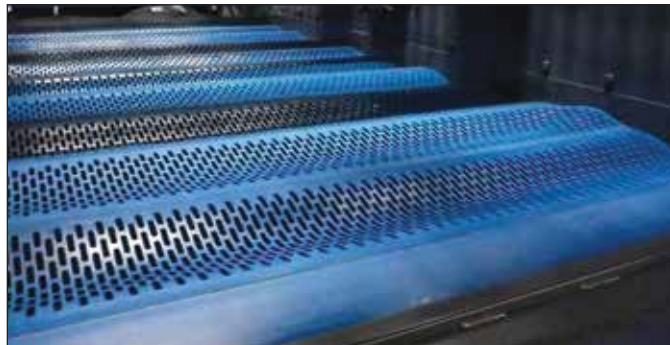
Conveyor fully skirted



Hopper



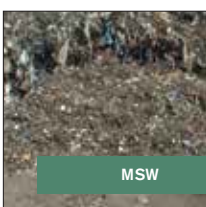
Side tensioned mats (Option)



Screenbox- Flip-flow bottom deck



Screenbox can be Hydraulically raises to facilitate mesh changing



MSW



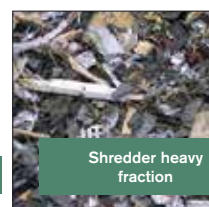
C+D / C+I



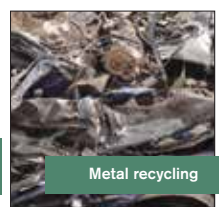
Incineration slag



Shredder light fraction



Shredder heavy fraction



Metal recycling

FINES CONVEYOR

Belt width: 800mm (32")

Belt spec: plain belt

Working Angle: 24° - 28° max

Rosta scraper on head drum

Speed: variable speed, 120 m/min (394ft/min) max belt speed

Standard Discharge Height: 4m (13' 1")

Stockpile capacity: 95m³ (124yd³) max

Optional telescopic section

Extended Discharge Height: 4.8m (15' 9")

Stockpile capacity: 164.48m³ (215.14yd³) max

MIDGRADE CONVEYOR

Belt width: 800mm (32")

Belt spec: chevron belt

Working Angle: 22° - 26° max

Speed: variable speed 120 m/min max belt speed

Standard Discharge Height: 3.40m (11' 2")

Stockpile capacity: 58m³ (76yd³) max

Optional telescopic section

Extended Discharge Height: 4.1m (13' 5")

Stockpile capacity: 102.5m³ (134.1yd³) max

POWERUNIT AND HYDRAULICS

Tier 3 Equivalent: Caterpillar C4.4

Engine Power: 83kW (111.3hp)

Engine Speed: 2200 rpm

Stage IIIA Constant Speed: Caterpillar C4.4

Engine Power: 98kW (131hp)

Engine Speed: 1800 rpm

Tier 4F / Stage IV: Caterpillar C4.4

Engine Power: 82kW (110hp)

Engine Speed: 2200 rpm

Pump 1: Triple 33/33/26cc (Tier 3 & Tier 4)

One section driving panfeeder or right track

Second section driving oversized & middle grade in parallel or left track

Third Section driving the fines conveyor

Pump 2: 46/27cc (Tier 3 & Tier 4)

Driving screenbox and fines/transfer

Pump 1: Triple 63/41/41cc (Constant Speed)

First section driving the screen

Second section driving the oversized or mid-grade conveyors in parallel or the right track

The third section driving the feeder or the left track

Pump 2: Tandem 33/33cc (Constant Speed)

Driving the fines and transfer conveyor

TANK CAPACITIES

Hydraulic Tank Capacity: 470 litres / 103.4 UK gal / 124.2 US gal

Fuel Tank Capacity: 327 litres / 72 UK gal / 86 US gal

UNDERCARRIAGE

Shoe Width: 400mm (16")

Sprocket Centres: 3.28m (10' 9")

Speed: 0.8kph

Gradeability: 24.8°

Raking Angle: 12° min



Fines Conveyor



Midgrade Conveyor



Oversize Conveyor



Powerunit and Hydraulics and Easy Service Access

WORKS FOR YOU.

ELECTRICAL SPECIFICATION (DUAL POWER)

2 x 37kW IE3 electric motors c/w hydraulic gear pumps and electrical control panel allowing machine to run in either Diesel or Electric mode. Suitable for voltage supplies varying from 380V – 440V at 50Hz frequency.

Electric Pump 1: Triple 51cc/36cc/36cc
The first section drives the feeder
The second and third section drives the screen

Electric Pump 2: Triple 63cc/41cc/41cc
The first section is split to drive either the middle grade or the oversize minus conveyor

The second section drives the fines (independent fines/collection) or mids (independent mids/overs) or stockpiler
The third section drives the collection, jacking legs and the fines (when not independent fines/collection option)

Please note; when a constant speed engine is used then the second section from each motor will swap role, i.e. the screen will then be driven from the third section of the first motor and the second section of the second motor

STANDARD FEATURES

ENGINE:

Tier 3 Equivalent Caterpillar C4.4 - 4 cylinder diesel engine developing 83kW (111.3 hp) 2200 RPM

Stage 3A Caterpillar C4.4 98kW (131hp) Constant Speed Engine

FEEDER:

Abrasion Resistant plate steel pan apron feeder with heavy duty chain drive

Fixed Hopper

Remote start stop of pan feeder

SCREENBOX:

SPALECK 3D- Combi- Flip- Flow- Screen

4.8m x 1.5m (16' x 5') 3D Metal Punch Plate top deck - complete 30x35mm, 40x50mm, 65x75mm or 80x100mm'

4.8m x 1.5m (16' x 5') Flip-Flow technology bottom deck -High-resistant polyurethane mats complete (contact factory for sizes)

600mm Feed impact plate

Hydraulic raise for mesh changing (500mm)

OVERSIZE CONVEYOR:

Belt Width: 1.2m (48") chevron belt & skirting

MIDDLEGRADE CONVEYOR:

Belt Width: 800mm(32") chevron belt with variable speed & thumper roller

FINES CONVEYOR:

Belt Width: 800mm (32") Plain belt with variable speed and belt scraper

Separate hydraulic drive for both transfer and fines conveyor

ELECTRICAL:

Emergency Stops (4 nr)

Control operation of tracks via hand held-set with 5m connection lead

T-Link Telemetry System fitted c/w 3 years data subscription
NOTE: Only included with CAT 97Kw engine option

GENERAL:

Safety guards in compliance with machinery directive

Low level greasing



Dual Power System

OPTIONAL EQUIPMENT

Dual Power – 2 x37kW IE3 electric motors c/w hydraulic gear pumps and electrical control panel allowing machine to run in either Diesel or Electric mode ***STD voltage supply: 380V - 440v @ 50Hz. (Contact the factory for availability, leadtime and, if any local requirements are different from standard offering**

Tier 3 Equivalent Caterpillar C4.4 - 4 cylinder diesel engine developing 97kW (130hp) @ 2200rpm

Tier 4F / Stage IV - Caterpillar C4.4 - 4 cylinder diesel engine developing 82kW (110 Hp) @ 2200 RPM

10mm Abrasion Resistant Plate lined hopper

Hydraulic driven cleaning brush for pan feeder

3D Rubber punch plate top deck - complete 30x35mm, 40x50mm, 65x75mm or 80x100mm'

Punched Rubber top deck mats. 30, 40, 50, 65 & 80mm Square apertures available

Side tensioned mesh top deck

Modular flip flow top deck. Note Maximum feedsized reduced to 80mm

3D Church Window punch plate top deck - complete 30x35mm, 40x50mm, 65x75mm or 80x100mm'

Optional Reinforced Top deck for Side Tensioned rubber media

Punch plate impact plate - 30mm or 50mm aperture available, please specify

Rigid fingers top deck, 10mm to 75mm aperture available, please specify

Top deck bofor bars

Top deck flex turning fingers, fitted at the end of each modular media section

Bottom deck Mat side sealing

Extended fines & middle grade conveyors

Impact bars full length of oversize conveyor

Magnetic Drive drum on Mid Grade Conveyor (Only Available on STD Conveyors and not Telescopic side conveyors)

Magnetic Drive drum on Fines Conveyor (Only Available on STD Conveyors and not Telescopic side conveyors)

Radio remote control of tracks

68 grade hydraulic oil

300mm increased ground clearance extension

1 nr stockpiler drive (Note: Removes separate drive on transfer and fines conveyor)

OR Separate drive for middle & oversize conveyors (Note: Removes separate drive on transfer and fines conveyor)

Special paint colour (if different from Finlay Orange RAL 2002) RAL on order

Powerunit

- ▶ Tier 3 Equivalent: Caterpillar C4.4
- ▶ Engine Power: 83kW (111.3hp)
- ▶ Engine Speed: 2200 rpm
- ▶ Tier 3 Equivalent: Caterpillar C4.4
- ▶ Engine Power: 97kW (130hp)
- ▶ Engine Speed: 2200 rpm
- ▶ Stage IIIA Constant Speed: Caterpillar C4.4
- ▶ Engine Power: 98kW (131hp)
- ▶ Engine Speed: 1800 rpm
- ▶ Tier 4F / Stage IV: Caterpillar C4.4
- ▶ Engine Power: 82kW (110hp)
- ▶ Engine Speed: 2200 rpm

Hopper / Feeder

- ▶ Hopper Capacity: 7m³ (9.16yd³)
- ▶ Feed height: 3.6m (11' 10")
- ▶ Feed in width: 2.6m (8' 7")
- ▶ Drive: Hydraulic variable speed drive via high torque gearbox
- ▶ Apron feeder dimensions: 1m wide x 3.81m (40" x 12' 6")
- ▶ Speed: variable, 0 - 25mpm (83ft/min)
- ▶ Abrasion Resistant steel pan apron feeder mounted with wide mouth opening

Screenbox

- ▶ Top deck: 4.8m x 1.53m (16' x 5')
- ▶ Bottom deck: 4.8m x 1.53m (16' x 5')
- ▶ 3D punch plate top deck
- ▶ Flip - Flow technology bottom deck
- ▶ Screenbox can hydraulically adjust to an angle between 13° - 19°

Midgrade Conveyor

- ▶ Belt width: 800mm (32")
- ▶ Belt spec: chevron belt
- ▶ Working Angle: 22° - 26°
- ▶ Speed: variable speed 120 m/min (394 ft/min) max belt speed
- ▶ Standard Discharge Height: 3.4m (11' 2") max
- ▶ Stockpile capacity: 58m³ (76yd³) max
- ▶ Optional telescopic section
- ▶ Extended Discharge Height: 4.1m (13' 45")
- ▶ Stockpile capacity: 102.5m³ (134.1yd³)

Fines conveyor

- ▶ Belt width: 800mm (32")
- ▶ Belt spec: plain belt
- ▶ Working Angle: 24° - 28°
- ▶ Rosta scraper on head drum
- ▶ Speed: variable speed, 120 m/min (394 ft/min) max belt speed
- ▶ Standard Discharge Height: 4m (13' 1") max
- ▶ Stockpile capacity: 95m³ (124yd³) max
- ▶ Optional telescopic section
- ▶ Extended Discharge Height: 4.8m (15' 9")
- ▶ Stockpile capacity: 164.48m³ (215.14yd³)

Transfer conveyor

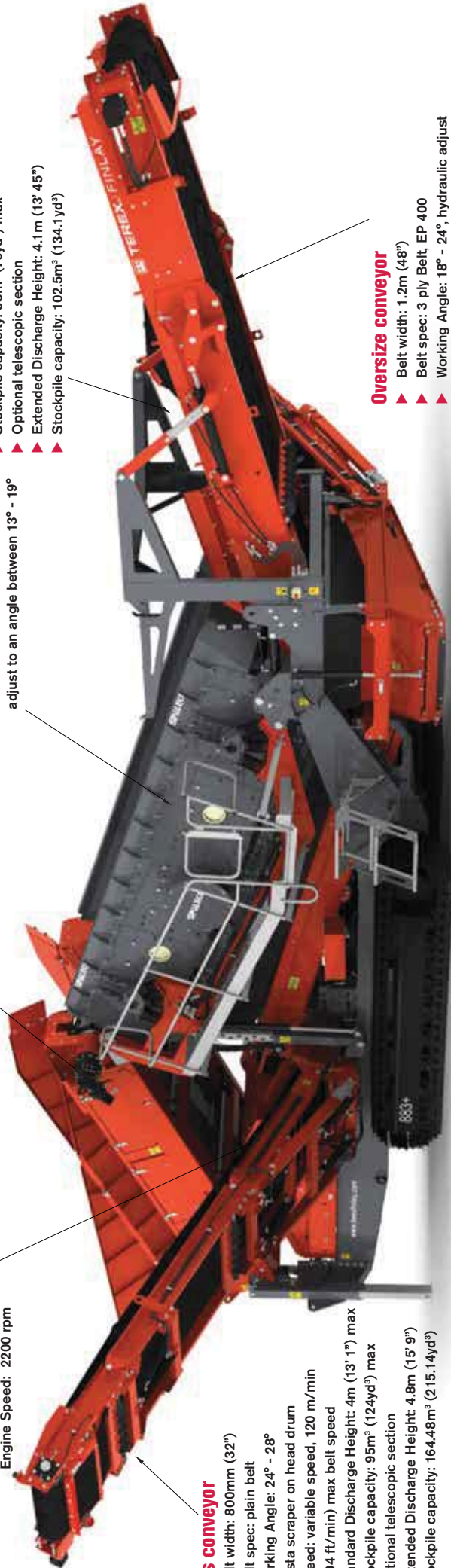
- ▶ Belt width: 1.2m (48")
- ▶ Belt spec: 3 ply Belt, EP 400
- ▶ Belt Speed: 83 m/min (272 ft/min)
- ▶ Conveyor fully skirted

Undercarriage

- ▶ Shoe Width: 400mm (16")
- ▶ Sprocket Centres: 3.28m (10' 9")
- ▶ Speed: 0.8kph
- ▶ Gradeability: 24.8°
- ▶ Raking Angle: 12° min

Oversize conveyor

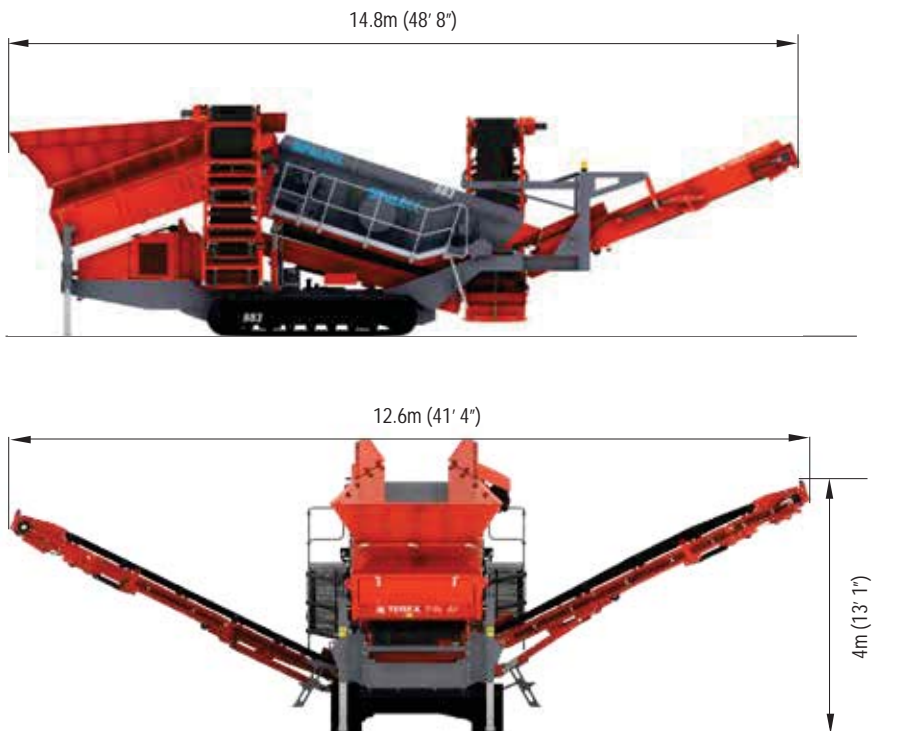
- ▶ Belt width: 1.2m (48")
- ▶ Belt spec: 3 ply Belt, EP 400
- ▶ Working Angle: 18° - 24°, hydraulic adjust
- ▶ Speed: Variable speed, 50 m/min max belt speed
- ▶ Impact bars 2/3 Length of Conveyor
- ▶ Steel skirted full length of conveyor
- ▶ Discharge Height: 3.6m (11' 10")
- ▶ Stockpile capacity: 70m³ (91yd³) max



TRANSPORT DIMENSIONS



WORKING DIMENSIONS



MACHINE WEIGHT: 30,500kg (67,240lbs)

For further information on specific machine weight configurations please consult Terex Finlay